



PowellShirts.com

33 Powell Drive
Waynesboro, MS 39367
601-735-5617/866-900-8470
Anthony@PowellShirts.com

Sweatshirt Color Chart

Please allow for slight color variation. Colors are subject to availability.

These shirt colors will work for any print color, and are always great for photos.

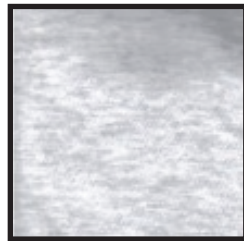


White
Youth and
Adult Sizes
up to 3X



Natural
Adult Sizes
up to 2X

These shirt colors will work for almost any print color, but they usually aren't good for photos due to their "mingled" appearance.

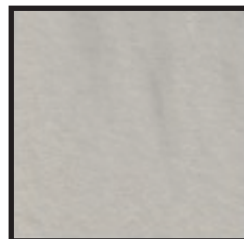


Ash
Youth and Adult
Sizes to 3X



Gray
Youth and Adult
Sizes to 3X

These shirt colors will work for almost any print color, and photos almost always look good on them, too.



Sand
Youth and
Adult Sizes to 2X



Light Pink
Youth and Adult
Sizes to 2X

These shirt colors will work well with any print color that is darker than the shirt color. Photos sometimes look good on these colors. Email us your photo for a consultation if you are considering one of these colors for a photo.



Light Blue
Youth and Adult
Sizes to 2X



Serene Green
Adult Sizes to 2X



Yellow Haze
Youth and Adult
Sizes to 2X



Tan
Youth and Adult
Sizes to 2X

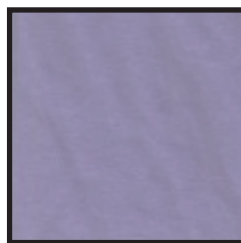


Carolina Blue
Youth and Adult
Sizes to 2X

Choose these shirt colors for darker print colors, such as dark red, dark green, navy, and black.



Gold
Youth and Adult
Sizes to 2X

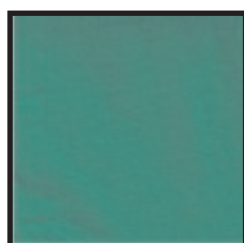


Violet
Youth and Adult
Sizes to 2X

Only black or dark navy print will show up well on these shirt colors.



Paprika
Adult Sizes to 2X



Irish Green
Youth and
Adult Sizes to 2X



Red
Youth and
Adult Sizes to 3X



Orange
Youth and
Adult Sizes to 2X